

LD43DRG

MINIATURE DEEP RECESSED TRIMLESS
EXTERIOR UPLIGHT WITH GLASS BEZEL




CB | RLEED | R+R | MOISTURE GUARD



The LD43DRG is a miniature, ultra-deep recessed, LED in-ground uplight. The LED and optics are recessed at 33mm into the body for super low glare, which can be further reduced with an optional glare shield. Due to the miniature aperture of the LD43DRG, it is available in a narrow 12° beam only, offering defined edges, ideal for lighting doorways or narrow corridors. Featuring a high-quality, seamless glass top, the LD43DRG blends perfectly into its surroundings.



KEY FEATURES

- > High-power C1 engine with NICHIA LED delivering up to 137lm
- > Miniature fitting with LED and optics deep recessed 33mm for reduced glare
- > Available with a narrow 12° beam only due to the size of the aperture
- > Durable all glass bezel, suitable for a wide range of applications
- > Optional glare shield accessory for further reduced glare
- > Hidden fixing options include a rebate sleeve with O-ring or trimmed sleeve with O-ring. Also available with a ground tube
- >  Contains our integral moisture guard (anti-wicking barrier), stopping water ingress from going up the cable into the product from incorrect IP-rated connections
- > Switched, 0-10V, Casambi, DMX, DALI or Mains dimmable drivers available



DIMENSIONS

Dimensions in mm

For fixing dimensions please go to page 3.



WHITE LED ENGINE SPECIFICATION

| | | | |
|---------------------------------------|--|--------------|--------------|
| Engine |  C1 | | |
| Beam angles | 12° | | |
| LED manufacturer | NICHIA | | |
| Colour temperature | 2200K / 2700K / 3000K / 4000K / 5000K | | |
| Current | 350mA [1.2W] | 500mA [1.7W] | 700mA [2.4W] |
| Typical LED Circuit wattage | 1.1W | 1.6W | 2.3W |
| Delivered lumens (L ₁₀₀)* | 63 | 82 | 137 |
| Lumens per circuit watt | 53 | 48 | 57 |
| Forward voltage (V ₁₀₀) | 3V | 3.2V | 3.4V |
| CRI (Typ) | 93 | | |
| Colour consistency | 2 SCDM | | |
| Peak intensity | 9788 cd | | |
| LED Lumens | 206 | | |
| LOR | 0.67 | | |
| TM30 | RF93 | RG99 | |
| UGR*** | 14.9 | | |
| LED lifetime | L90B5 at 90,000hrs | | |
| Applications |  | | |

This data is based on LD43DR-C1-700-LW30-NB

*Lumen output data applies to all colour temperatures

**Indicates the nominal power for the LED run at that particular current and includes losses associated with using an 85% efficient driver

*** UGR values based on room parameters of 4H 8H, C70 W50 F20

MECHANICAL

| | 350mA | 500mA | 700mA |
|-------------------------------|--|---------------|---------------|
| Ambient temperature ○ 55°C | -20°C to 55°C | -20°C to 50°C | -20°C to 35°C |
| Glass | 3mm thick borosilicate glass with ceramic screen print | | |
| Materials | Black anodised aluminium body with black anodised bezel and glass front | | |
| Weight of product | 0.015kg | | |
| IP rating | IP66 | | |
| Wiring | In-series constant current wiring (pre-wired with 2 core cable at a length of 250mm) | | |

ENVIRONMENTAL

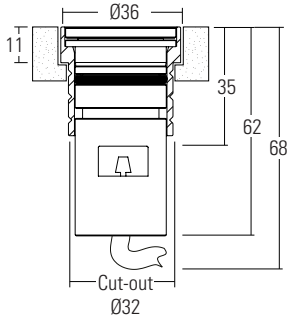
| | | | |
|-----------------------------------|---|--|--|
| TM65 | Available on request | | |
| TM66 | 2.7 | | |
| Repair + Refurbish |  This product is included in our Repair and Refurbish scheme. This offers customers the ability to send back products to us for repair or refurbishment to extend their life without having to buy new fittings. | | |
| RLE (REPLACEABLE LIGHT ENGINE) |  Visit page 5 for replacement parts | | |

DIMENSIONS AND FIXING ACCESSORIES

Dimensions in mm

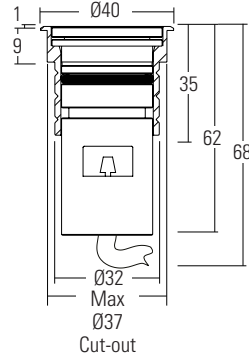
/480SG Rebate trimless fixing sleeve and O-Ring

A robust and water tight method of fixing, for in ground applications. Mounting surface will require an 11mm rebate to allow for flush installation. Fixing ring available with a passivated stainless steel or powder coat black finish.*



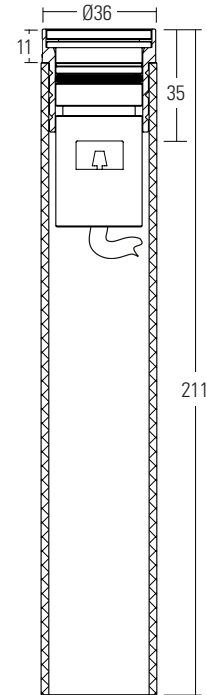
/480TRG Minimalist Trimmed Sleeve and O-Ring

A robust and water tight method of fixing, with trimmed edge bezel for easy installation due to no rebate being required. Fixing ring available with a passivated stainless steel or powder coat black finish.*



/480GTG Ground tube

The in-ground tube has been designed for applications where a recessed uplighter is required in soil or gravel terrain, and can also be used in concrete. The tube can be buried with the necessary wiring, and then the fitting installed after the landscaping work has been completed. It is supplied with the fixing sleeve bonded into the tube, and can be cut down on site. Fixing ring available with a passivated stainless steel or powder coat black finish.*



*NOTE: Powder coat black paint finish is not suitable for high-traffic areas.

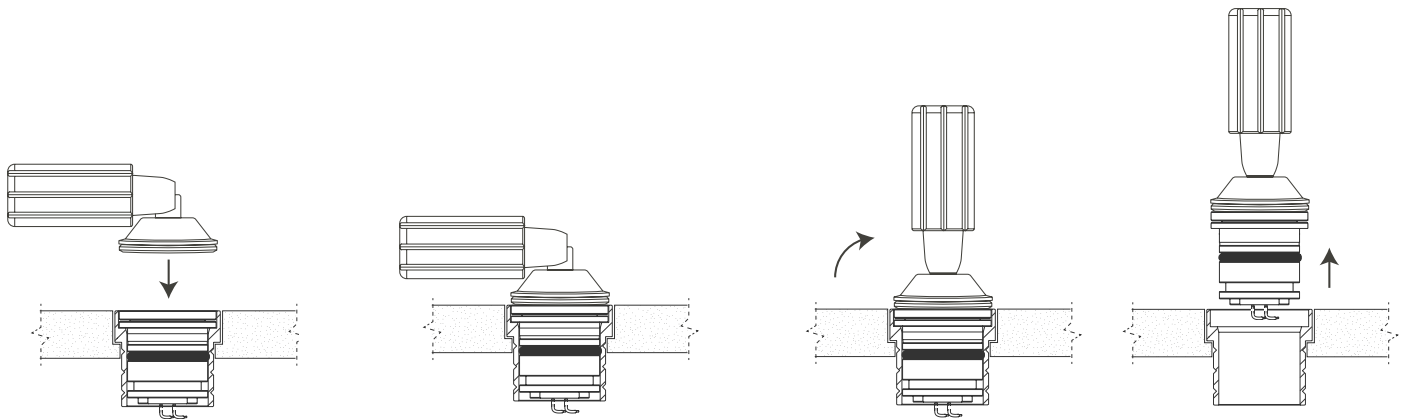
/HT-44-G Trimless Family Hand tool

We supply our Trimless family fittings with a hand tool for easy installation and removal. Use the /HT-44-G suction cup or a similar suction tool for the removal of the fittings from their fixing options. Please contact your LightGraphix sales representative for more information.



How to use the hand tool

- 1 Set tool to a 90° angle.
- 2 Press tool firmly onto glass.
- 3 Tilt handle up to create suction, and pull directly upwards to remove fitting.
Note: Do not twist during removal as this could damage the bezel.



GLARE CONTROL OPTIONS

/NGS No glare shield

No glare shield. Low glare optic and matt black anodised optic holder aids in glare reduction.



/GS45 Glare shield

An optional glare shield is available to further reduce glare from the LED and optic. This is useful in narrow details where people are going to walk directly over the fitting.

This does not reduce the light on the lit surface (wall) but will cut out some light onto the ceiling. Please note that the Oval beam cannot be used with GS45.



RLE - REPLACEABLE LIGHT ENGINES

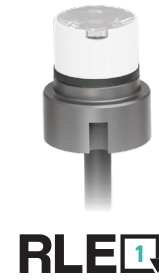


What is RLE

On the surface, RLE is LightGraphix's answer to the Circular economy question that is facing many industries at the moment. However for us, RLE is an ethos; a commitment that LightGraphix will factor in the principles of good circular design into all of its future product design. It allows us to offer luminaires that contain replaceable, energy-efficient light engines. This gives customers the ability to refurbish existing lighting installations rather than having to replace the entire luminaire. This will fall into two types of refurbishments: replaceable, and repairable.

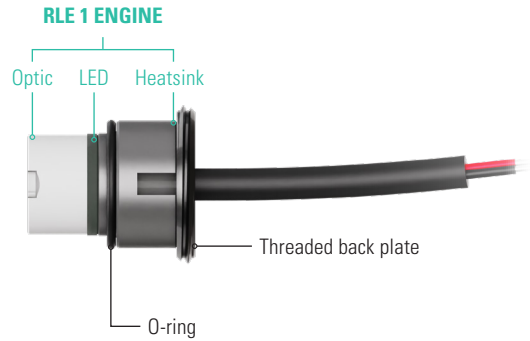
RLE Engines

Repairs can be conducted on any site worldwide, or in our factory, with a small tool. Simply swap out the singular modular LED insert, and replace it with another, along with a new optic, which are both supplied by us. The warranty provided with the product varies based on who is performing RLE repairs. There are three types of RLE engine, categorised based on the size of the product. RLE1 is the smallest, with RLE3 being the largest.



LD43DR RLE REPLACEMENT PARTS

Please use the configurator below to specify your replacement engine and optic. If you are unsure of your original specifications, please check the label on your LightGraphix fitting, or get in touch with our sales team. Installation sheets will be supplied with the new components.



| RLE Engine | | LED Colour | | Beam Angle | | Accessories | |
|--------------|-------|----------------------------|-------|------------------------|--------------|---------------------|---------|
| RLE1/ | | | | | | | |
| RLE 1 ENGINE | RLE1/ | Super Warm White (2200K) | /LW22 | Narrow beam 16mm optic | RLE/OP-16/NB | O-ring | RLE/OR2 |
| | | Extra Warm White (2700K) | /LW27 | | | Threaded back plate | RLE/TBP |
| | | Warm White (3000K) | /LW30 | | | | |
| | | White (4000K) - on request | /LW40 | | | | |
| | | Cool White (5000K) | /LW50 | | | | |

ORDER CODES & OPTIONS

Example: LD43DRG-C1-500/LW30/NB/GSHM/480SG/Paint finish Black

Light Engine & Drive Current

LED Colour

Beam Angle

Glare shield

Fixing

Fixing Finish

LD43DRG - / / / / / /


Ambient temperature key: 55°C

○ **C1**


| | |
|-------------------|----------------|
| 1.2W LED at 350mA | LD43DRG-C1-350 |
| 1.7W LED at 500mA | LD43DRG-C1-500 |
| 2.4W LED at 700mA | LD43DRG-C1-700 |

| | |
|----------------------------|-------|
| Super Warm White (2200K) | /LW22 |
| Extra Warm White (2700K) | /LW27 |
| Warm White (3000K) | /LW30 |
| White (4000K) - on request | /LW40 |
| Cool White (5000K) | /LW50 |

| | |
|------------|-----|
| 12° Narrow | /NB |
|------------|-----|



/NGS



/GS45
(not applicable with Oval beam)



/480SG



/480TRG



/480GT



Passivated
Stainless Steel



Paint finish
Black
(Powder Coat)

Drivers

Use with 350mA, 500mA & 700mA constant current LED drivers
We have a range of dimmable LED drivers including DMX and DALI compatible. Please see the downloads section on our website.